

TECHNICAL SPECIFICATIONS TRAFICAM 2ND GENERATION

HARDWARE:

- In General:

- Camera & detector board integrated in compact, esthetical housing
- Material:
 - Housing:
 - Front Shell: Painted semi sphere of polycarbonate
 - Mid Section: Fiber reinforced polyamide
 - Back Shell: Painted semi sphere of polycarbonate
 - Mounting Bracket:
 - Mounting Device:
 - ✓ U-profile: L = 18 cm
 - ✓ Fiber reinforced polyamide
 - ✓ Steel bands or bolts to be used for fixation
 - Clamps for TrafiCam & Mounting Device:
 - ✓ 2 tube clamps
 - ✓ Fiber reinforced polyamide
 - Connection TrafiCam - Mounting Device:
 - ✓ Tube: L = 25 cm, Ø = 13 mm
 - ✓ Aluminum
- Mass ≈ 600 g (excl. cable; sensor ≈ 300 g, mounting bracket ≈ 300 g)
- Height x Width x Depth (max. dimensions, incl. mounting bracket)
 - Vertically Mounted ≈ 45 cm x 16 cm x 10 cm
 - Horizontally Mounted ≈ 41 cm x 18 cm x 10 cm
- Diameter Sphere: ≈ 10cm
- Temperature Range: from -34°C to +80°C
- Humidity: up to 95% non-condensing



- Camera Details:

- Camera Type:
 - Technology: Black & White CMOS
 - Sensor Size: 1/3"
 - Resolution: 640x480 pixels
 - Frame Rate: 30FPS
 -
- Lens Types:

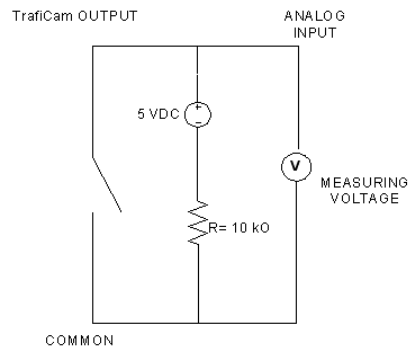
	Focal distance	Field of view
Wide angle (product reference n° 10-6030)	3,0 mm	Horizontal: 95° Vertical: 65° Corner to corner: 103°
Narrow angle (product reference n° 10-6031)	8,0 mm	Horizontal: 32° Vertical: 22° Corner to corner: 39°

Power Supply, Outputs & Communications:

- o Input Power: 12-26VAC/DC
- o Current Consumption: < 85mA @ 12VDC; < 50mA @ 24VDC
- o Power Consumption: ≤ 1,2W
- o 4 Optical Coupled Dry Contacts: $P_{max} = 300mW$, $I_{max} = 50mA$, $U_{max} = 48VDC$
- o RS-485 for Configuring & Viewing

REGULATORY ISSUES:

- **EMC:** Electromagnetic Compatibility - 2004/108/EG
- **FCC:** FCC Part 15 Class A
- **Shock & Vibration:** NEMA II specs
- **Materials Weatherproof (UV-resistant)**
- **Housing Waterproof to IP67**



Open: U = 5 V
Closed: U = 0 V
 Ir = 0,5 mA
 Pr = 2,5 mW

SOFTWARE:

- **Configuration & Monitoring (verification):** via TRAFICAM PC TOOL on portable PC, via interface
 - o Detection zones: Max. 8 “Virtual Loops” per Traficam (can be made direction sensitive)
 - o Output Assignment:
 - Assign max. 4 outputs per Traficam
 - Assign 1 output to multiple zones (logical functions: and, or)
 - Select “close on event” (= default setting) or “open on event”
 - o Snapshot (single JPEG image)
 - o Video (JPEG images refreshing): Refresh detection zone or complete image
- **Recording:** via TRAFICAM RECORDER TOOL on a portable PC and via interface
- **Playback:** via TRAFICAM PLAYBACK TOOL on a (portable) PC

Traficam output wiring diagram

CONNECTION TRAFICAM - INTERFACE:

- **Recommended Type of Cable:** Shielded Twisted Pair (STP), UV resistant
- **Required Number of Wires:**
 - o 4 wires + shielding for the interfaces “1TI” and “4TI”
 - o 9 wires + shielding for the interface “TI (9 wires)”
- **Minimum / Maximum Wire Diameter:** 0,3 mm / 2 mm
- **Minimum / Maximum Cable Diameter:** 5 mm / 9,2 mm (Determined by the cable gland of the Traficam)
- **Maximum Cable Length:** 300 m (Highly depends on cable quality and local conditions, i.e. local sources of interference. Note that there can be a significant voltage drop over long distances)
- **Note:** cable is not standard included

YOUR CONTACT

