

User guide TrafiCam recorder and playback tool

This document describes the **use** of the **recorder** and **playback tool** for TrafiCam. The recorder tool records detection information for a detection zone of TrafiCam. The playback tool is used to view and analyse these recordings.

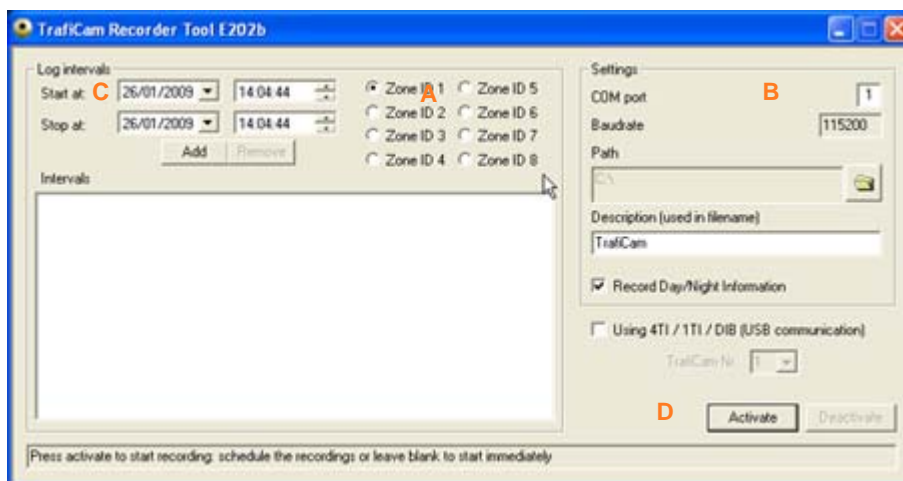
1. Use the recorder tool

The PC port for communication with TrafiCam depends on the interface:

- USB port for the interfaces 4TI and 1TI
- Serial port for the TI (9 wires) interface

Verify if the recorder tool is the only application or service that uses this port of the PC. **Always close TrafiCam PC Tool before starting the recorder tool.**

- Start the recorder tool
The following window appears.



The recorder tool

- Select the zone for recording (A).
- Set the COM port and select the storage path (B).
One minute of recording will take 2 MB of disk space.

To define a recording schedule, use the **Add** or **Remove** button to compose a recording schedule (C). Define the intervals in chronological order. Per time interval, recording applies to one zone. However you can compose a recording schedule where different time intervals apply to different zones.

- Click **Activate** to start recording.
To stop recording, click **Deactivate**.

Note: Do not close the recorder tool until the recording has ended.

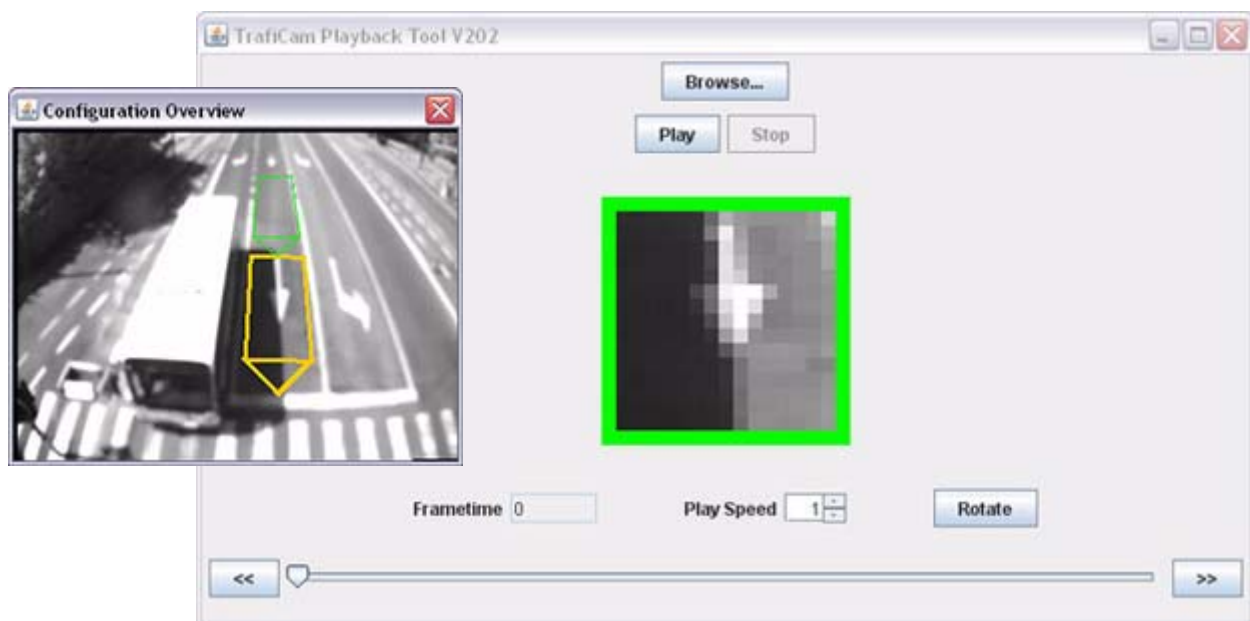
TrafiCam recorder and playback tool (V202)

For each recording you obtain 2 files:

- xml-file for **visualisation/analysis**: <yyyymmdd>-<description>-<interval number>, e.g. 20080129-Trafficam-1
- txt-file (**log** file): <yyyymmdd><description>-log-<interval number>, e.g. 20080129-Trafficam-log-1

2. View a recorded sequence with the playback tool

- Start the TrafiCam playback tool
- **Browse** to select the xml file.
A single image from the sensor appears with the recorded zone indicated in yellow.



Playback of a recorded file with single image on the left

- Use the buttons **Play** or **Stop** for playback of the file.
You can also use the bar to scroll through the file.

To change the playback speed, adapt the **Play Speed**.
In addition you can **Rotate** the view.

Notice

The information contained in this document is subject to change without notice.

Traficon n.v. makes no warranty of any kind with regard to this material, including, but not limited to, the implied warranties of merchantability and fitness for a particular purpose.

Traficon n.v. shall not be liable for errors contained herein or for incidental or consequential damages in connection with the furnishing, performance, or use of this material.

No part of this document may be copied, reproduced, or translated to another language without the prior written consent of Traficon n.v.

Copyright © 2009 , Traficon n.v. - All rights reserved

Traficon n.v.
Vlamingstraat 19
B-8560 Wevelgem
Belgium

Tel +32 (0)56 37.22.00
Fax +32 (0)56 37.21.96
E-mail traficon@traficon.com